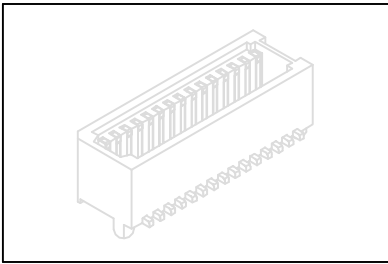


# Female Board To Board 0.8mm(0.0315")

# GXCON



**Material:**

**Housing:** High temperature housing withstands IR and VPR soldering methods.

**Contacts:** Brass.

**Plating:** Gold plated over nickel.

**Electrical Characteristics:**

**Current Rating:** 0.5 AMP.

**Insulator Resistance:** 100MΩmin. at DC 500V.

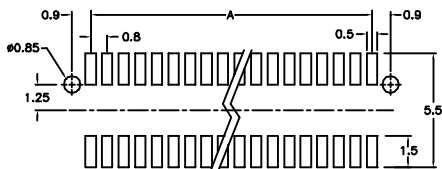
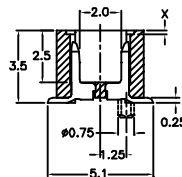
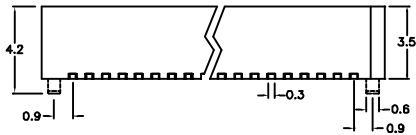
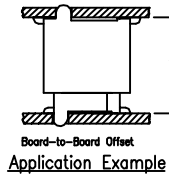
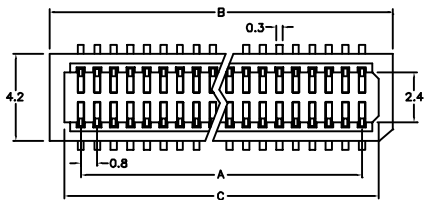
**Contact Resistance:** 40mΩmax. at DC 100mA.

**Operating Temperature:** -40°C~+105°C.

**Max Processing Temperature:** 230°C for 30~60 seconds.

**Features:**

- \* Tube Packing.
- \* Ribbon mating type



P.C. Board Layout  
(Top View)

X Length	1	2
	0.1	0.5
Y Length	1	2
	4.6	5.0

Position Dimension	10 Thru 100
A±0.05	0.8 X (No. of Positions / 2-1)
B±0.15	0.8 X No. of Positions / 2+1.8
C±0.05	0.8 X No. of Positions / 2+0.8

**Ordering information**

PS41- 100 1 3 P 1  
 Series No. of Pin Count 1: Gold plated 3: S.M.D. Type. P: With Post N: Without Post 1: X Length 0.1mm. 2: X Length 0.5mm.